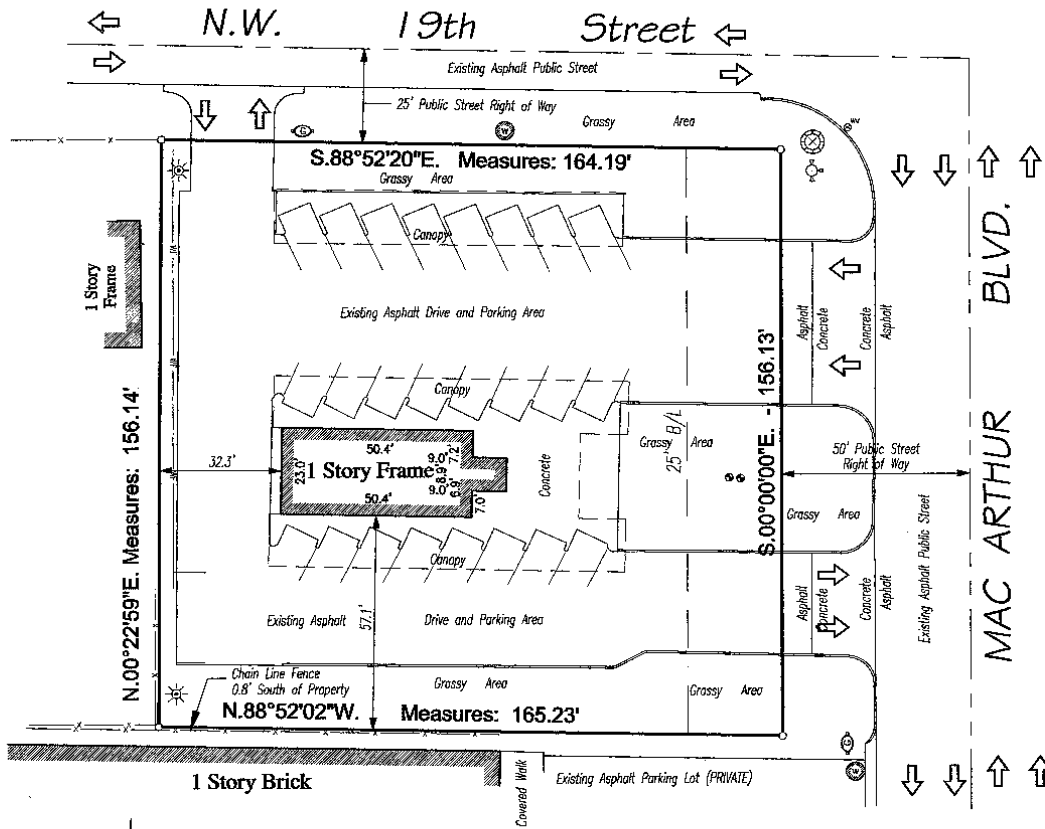


**PLAT OF SURVEY**  
 A part of Lot 21 and Lot 22 in Holtman-Stiner Gardens  
 Oklahoma City, Oklahoma County, Oklahoma



SCALE: 1" = 40'



- - Iron Pin with Surveyor's Identification Cap stamped "JS Yager LS 1006"
- x — x — x — x — - Chain Link Fence
- w — w — w — w — - Wood Fence
- ☼ - Light Pole
- ⊕ - Oklahoma Natural Gas Gas Meter
- ⊙ - Water Valve
- ⊕ - Fire Hydrant
- ⊕ - Water Meter
- ⊙ - Sign Post
- ➡ - Traffic Direction Arrow
- ⊗ - Sanitary Sewer Manhole

**James S. Yager**

Licensed Professional Land Surveyor  
 Certificate of Authorization Number 2778 Expires: 30 June 2009  
 1212 South Air Depot \* Number 19 Suite 102

Midwest City, Oklahoma 73110 Telephone: 405-737-3412/Fax: 405-737-4215